



Kingfisher  
*Brixham*



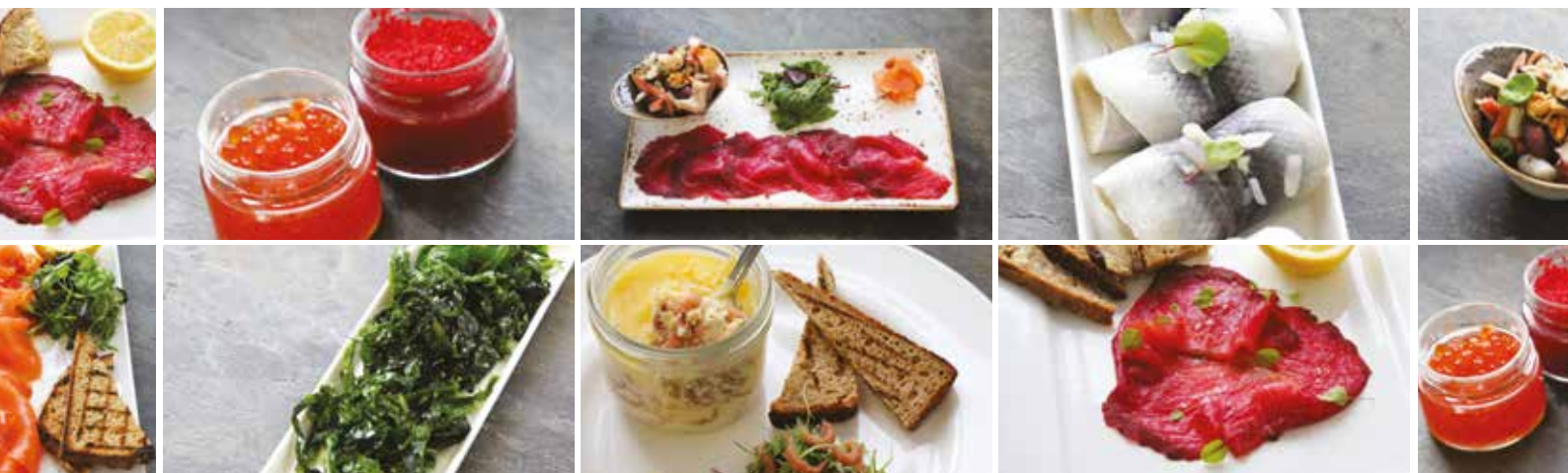
# SPECIALIST & DELI RANGE

Product Brochure

# WELCOME

We are fresh fish specialists, but we also have an extensive range of coated, deli, and frozen lines. This is alongside chef essential items such as cooking wines, stocks, and sauces.

This brochure showcases our Specialist and Deli Range for 2021.  
For more information and prices or if you would also like a copy of our coated or frozen brochure, please contact your account manager.



## CONTENTS

TITLE		PAGE
<b>Smoked &amp; Cured</b>	<i>Cod, Coley, Haddock, Kippers, Mackerel, Mussels, Prawn, Salmon, Gravdax, Cod, Sprats, Swordfish, Trout, Tuna.</i>	<b>3 - 6</b>
<b>Marinated</b>	<i>Anchovies, Cockles, Crayfish, Herring, Mussels, Prawn, Sardine, Seafood Salad, Tuna.</i>	<b>6 - 7</b>
<b>Shellfish</b>	<i>Crab.</i>	<b>7</b>
<b>Roes and Caviars</b>		<b>8 - 9</b>
<b>Seaweed and Sea Vegetables</b>		<b>10</b>
<b>Alternatives</b>	<i>Miscellaneous.</i>	<b>11</b>

# SMOKED & CURED

DESCRIPTION	CODE
Cod: Smoked Roe (Kg)	05CODR00K0A
Coley: Smoked (Kg)	05COL00K0A
Haddock: Fillet - Natural Smoked (3Kg Case) <i>*Also available frozen</i>	05HAD00E4V
Haddock: Fillet - Natural Smoked (Kg) <i>*Also available frozen</i>	05HAD00K0A
Haddock: Fillet - Angel Cut Natural Smoked (Kg)	05HADA00K0A
Haddock: Fillet - Broken Natural Smoked (Kg)	05HADB00K0A
Haddock: Fillet Enderby - Natural Smoked (Kg)	05HADEN00K0A
Haddock: Fillet Natural Smoked - Skinless (Kg)	05HADS00K0A
Haddock: Fillet Smoked - Dyed Yellow (Kg) <i>*Also available frozen</i>	05HADY00K0A
Kippers: Whole (3Kg Case) <i>*Also available frozen</i>	05KIP000E4V
Kippers: Whole (Kg) <i>*Also available frozen</i>	05KIP00K0A
Kippers: Fillet (Kg) <i>*Also available frozen</i>	05KIPF00K0A
Kippers: Fillet (3Kg Case) <i>*Also available frozen</i>	05KIPFV00E4V
Kippers: Manx (Kg) <i>*Also available frozen</i>	05KIPM00K0A
Mackerel: Whole - Smoked (Kg)	05MAC00K0A
Mackerel: Fillet - Smoked (Kg) <i>*Also available frozen</i>	05MACF00K0A
Mackerel: Fillet - Smoked - Peppered (Kg) <i>*Also available frozen</i>	05MACP00K0A
Mussels (In Shell) : Smoked - 500Gm Nett Pack (Each)	05MUS00E2K
Mussels: Meat - Smoked 500Gm Pack (Each)	05MUSMSW00E2N
Prawn: Smoked Shell On (500Gm Nett Pack)	05PRA00E2N
Salmon: Smoked - Sliced (100Gm Nett Pack)	05SAL00E0Q
Salmon: Smoked - Sliced (150Gm Nett Pack)	05SAL00E0Z
Salmon: Smoked - Sliced (200Gm Nett Pack)	05SAL00E1F
Salmon: Smoked - Sliced (250Gm Nett Pack)	05SAL00E1M
Salmon: Smoked - Sliced (400Gm Nett Pack)	05SAL00E2G
Salmon: Smoked - Sliced (454Gm Nett Pack) <i>*Special order only</i>	05SALL00E2K

# SMOKED & CURED

DESCRIPTION	CODE
Salmon: Smoked - D Cut Side (Kg)	05SALD00K0A
Salmon: Smoked - Long Cut Sides (Kg)	05SALL00K0A
Salmon: Smoked - Unsliced Side (Kg)	05SALU00K0A
Salmon: Smoked - Unsliced Fully Trimmed Side (Kg)	05SALUT00K0A
Salmon: Smoked 36 Hour - D Cut (Kg)	05SALL36K0A
Salmon: 36 Hour Smoked - Unsliced Side (Kg)	05SALU36K0A
Salmon: Smoked - Traditional Oak Smoked - D Cut Side (Kg)	05SALDTSW00K0A
Salmon: Smoked - D Cut - Welsh Cure (Kg)	05SALDS00K0A
Salmon: Smoked - Lightly Cured (Kg)	05SALC00K0A
Salmon: Smoked - Balic - Side (Kg)	05SALSBA00K0A
Salmon: Smoked - D Cut King Cure (Kg)	05SALDKSW00K0A
Salmon: Smoked - King Cure Long Cut Side (Kg)	05SALLKSW00K0A
Salmon: Smoked - Untrimmed - Severn & Wye King Cure (Kg)	05SALUKSW00K0A
Salmon: Smoked - Traditional Var - D Cut Side (Kg)	05SALDVA00K0A
Salmon: Smoked - Traditional Var - Long Cut Side (Kg)	05SALLVA00K0A
Salmon: Smoked - Beetroot - D Cut Side (Kg)	05SALBD00K0A
Salmon: Smoked - Gin Cure - D Cut (Kg)	05SALDGG00K0A
Salmon: Smoked - Side Lemon Dill & Black Pepper - D Cut (Kg)	05SALDLDP00K0A
Salmon: Smoked - Orange & Tarragon - D Cut Side (Kg)	05SALDO00K0A



(Smoked Salmon)

# SMOKED & CURED

DESCRIPTION	CODE
Salmon: Cured - Red Wine D Cut Side (Kg) <i>*Only available frozen</i>	05SALDRW00K0A
Salmon: Smoked - Treacle Cure Fully Trimmed Side (Kg)	05SALTT00K0A
Salmon: Smoked - Whisky Cured - Long Cut Side (Kg)	05SALLWC00K0A
Salmon: Smoked - Whisky & Dill - Sliced (Kg)	05SALWHD00K0A
Salmon: Smoked - Organic D Cut Side (Kg)	05SALDOGL00K0A
Salmon: Smoked - Organic - Long Cut Side (Kg) <i>*Special order only</i>	05SALOL00K0A
Salmon: Freedom Foods - Smoked - Long Cut Sides (Kg)	05SALLF00K0A
Salmon: Smoked - Trimmings (200Gm Nett Pack)	05SALT00EIF
Salmon: Smoked - Trimmings (500Gm Nett Pack)	05SALT00E2K
Salmon: Smoked - Trimmings Sugar Free (500Gm Nett Pack)	05SALTSF00E2K
Salmon: Smoked - Kedgerree D Cut (100Gm Nett Pack)	05SALDKRE00E0Q
Salmon: Hot Smoked Side (Kg)	05SALH00K0A
Salmon: Hot Smoked - Star Anise Ginger & Orange (Kg)	05SALHSA00K0A
Salmon: Hot Smoked Flakes (500Gm Nett Pack)	05SALHF00E2N
Salmon: Hot Smoked Flakes Sugar Free (500Gm Pack)	05SALHFSF00E2N
Gravadlax: Sliced Side D Cut (Kg)	05GRAD00K0A
Gravadlax: Unsliced Side (Kg)	05GRA00K0A
Gravadlax: Sliced (200Gm Nett Pack)	05GRA00EIF
Gravadlax: Beetroot - Sliced D Cut Side (Kg)	05GRAB00K0A
Gravadlax: Beetroot - Unsliced Side (Kg)	05GRABU00K0A
Gravadlax: Beetroot (200Gm Nett Pack)	05GRAB00EIF
Gravadlax: Orange & Tarragon - Sliced D Cut Side (Kg)	05GRADO00K0A
Gravadlax: Wasabi & Lime - Sliced D Cut Side (Kg)	05GRADW00K0A
Gravadlax: Wasabi & Ginger - Sliced D Cut Side (Kg)	05GRADWG00K0A
Cod: Salted Fillet (Kg)	07CODS00K0A

# SMOKED & CURED

---

DESCRIPTION	CODE
Sprats: Whole Smoked (Kg)	05SPR00K0A
Swordfish: Fillet - Smoked (200Gm Nett Pack)	05SWO00E1F
Trout: Fillet - Smoked (500Gm Nett Pack)	05TRO00E2N
Trout: Fillet - Smoked - (2 Fillets Per Pack) (125Gm Nett Pack)	05TRO00E7W
Trout: Smoked Sea Reared - L Cut Side (Kg)	05TROS00K0A
Trout: Smoked Sea Reared - D Cut (Kg)	05TOSRD00K0A
Tuna: Smoked Fillet (200Gm Nett Pack)	05TUN00E1F

# MARINATED

---

DESCRIPTION	CODE
Anchovies: Salted 800Gm Tin (Each)	07ANCS00E3K
Anchovies: Salted 1Kg Tub (Each)	07ANCS00E3Q
Anchovies: In Oil - 1Kg Tub (Each)	07ANC00E3Q
Cockles: In Brine (Large Tub)	07COCB00E4I
Crayfish: In Brine (900Gm Nett Tub)	07CRAB00E3M
Herring: Dill Marinade (Large Tub)	07HERD00E4P
Herring: Sweetcure Marinade (Large Tub)	07HERS00E4U
Herring: Rollmops (Large Tub)	07ROL00E4V

# MARINATED

---

DESCRIPTION

CODE

Prawn: In Brine (900Gm Tub)

07PRA00E3M

Prawn: In Brine (1.5Kg Tub)

07PRAB00E4A

Sardine: In Oil With Basil (1Kg Tub)

07SARO00E3Q

Seafood Salad In Oil (1Kg Tub)

07SEAO00E3Q

Tuna: Pouch In Brine (1Kg Pack)

07TUN00E3Q

Tuna: Chunk - Tinned In Brine (1.320 Drained Weight)

07TUNPF00E4F

---



(Brown Peeled  
Shrimp)

# ROES & CAVIARS

---

DESCRIPTION	CODE
Caviar: Avruga 120Gm Jar (Each)	07CAVA00E0T
Caviar: Beluga 50Gm Jar (Each) <i>*Special order only</i>	07CAVB00E0I
Caviar: Baerial - Nordic Royal (30Gm Each) <i>*Special order only</i>	07CAVBACA00E0E
Caviar: Baerial - Nordic Royal (250Gm Each) <i>*Special order only</i>	07CAVBACA00E1M
Roe: Lumpfish - Red (100Gm Jar)	07ROER00E0Q
Roe: Lumpfish - Black (100Gm Jar)	07ROEB00E0Q
Caviar: Mullet Bottarga (Kg)	07BOTMU00K0A



(Tobiko Flying Fish Roe  
& Salmon Keta)



# ROES & CAVIARS

---

DESCRIPTION	CODE
Caviar: Oscietra 30Gm Jar (Each) <i>*Special order only</i>	07CAVO00E0E
Caviar: Oscietra 50Gm Jar (Each) <i>*Special order only</i>	07CAVO00E0I
Caviar: Salmon Keta 100Gm Jar (Each) <i>*Special order only</i>	07CAVK00E0Q
Caviar: Sevruga 30Gm Jar (Each) <i>*Special order only</i>	07CAVS00E0E
Roe: Tobiko Flying Fish Roe - Green 80Gm Jar (Each)	07ROEFG00E0N
Roe: Tobiko Flying Fish Roe - Orange 80Gm Jar (Each)	07ROEFO00E0N
Roe: Tobiko Flying Fish Roe - Red 80Gm Jar (Each)	07ROEFR00E0N
Roe: Tobiko Flying Fish Roe - Yellow 80Gm Jar (Each)	07ROEFY00E0N
Roe: Tobiko Flying Fish Roe - Black 80Gm Jar (Each)	07ROEFB00E0N
Caviar: Trout 100Gm Jar (Each)	07CAVKT00E0Q
ASC-Trout: Roe (250Gm Nett Weight Pack) <i>*ASC Certified</i>	19TROR00E1M
Roe: Sea Urchin - 50Gm Jar (Each)	07ROEU00E0I

# SEAWEED & SEA VEGETABLES

---

## SEAWEED

DESCRIPTION	CODE
Seaweed: Dulce 1Kg Pack (Each)	04SEAWD00E0A
Seaweed: Kombu 1Kg Pack (Each)	04SEAWK00E3Q
Seaweed: Sea Lettuce 1Kg Pack (Each)	04SEAWL00E3Q
Seaweed: Wakame 1Kg Pack (Each)	04SEAWW00E0A
Seaweed: Nori 1Kg Pack (Each)	04SEAWN00E0A

## OTHER

DESCRIPTION	CODE
Samphire: Pickled 500Gm Jar (Each)	07SAM00E2N



(Seaweed:  
Wakame)

# ALTERNATIVES

---

## MISCELLANEOUS

DESCRIPTION	CODE
Cephalopod: Ink - Sachets (Each)	07SQU00E0B
Cephalopod: Ink - 500MI Jar (Each)	07SQU00E6Q
Cod: Roe (Kg)	07ROEC00K0A
Soup: Crab (0.85Ltr)	07CRAS00E6V
Soup: Fish (0.85Ltr)	07FISS00E6V
Soup: Lobster (0.85Ltr Jar)	07LOBS00E6V




## Get In Touch

Whatever your preferred method of contact, we are here to help.

**Tel: 01803 553 232**

**Email: [sales@kingfisherbrixham.co.uk](mailto:sales@kingfisherbrixham.co.uk)**

 [kingfisher\\_brixham](#)  [@Kingfisher\\_BXM](#)  [@kingfisherbrixham](#)  
YouTube: Kingfisher Brixham

Manage your account online and try our new  FreshFoodHub App.  
Please click on the website link to register.

[www.kingfisherbrixham.co.uk](http://www.kingfisherbrixham.co.uk)

